

LARGE PRODUCTION PACKAGE

E: info.dawnskyfilms@gmail.com

M: 07423635491

www.dawnskyfilms.com



Short Film, Feature Film, Documentary, Corporate,

Transportation = Sprinter Van

Crew: 

Milage = £0.45p per mile + Costs

Size Approximate only*

CAMERAS:

- Ursa Mini Pro 4.6k G2 with OLPF Kit [1]
- Ursa Mini Pro 4.6k G1 with OLPF Kit [1]

LENSES:

- 14,24,35,50,85,135mm Cine lens Kit (EF) [1]
- 18-35mm ZOOM (EF) [1]
- 24-105mm ZOOM (EF) [1]

FILTERS:

- 4x5.6 Clear Optical Flat [1]
- 4x5.6 Circular Polariser [1]
- 1/8, 1/4, 1/2, Cine Soft (77mm) [1]

MONITORING:

- 7" Video Assist Monitor [1]
- 7" Reference Monitor [1]
- 11" Reference Monitor [1]
- 17" Reference Monitor [1]
- Monitor Rigging accessories Kit [1]
- BNC/ HDMI Cables + BNC Barrels [7]

ACCSESORIES:

- Tilta Nucleus Nano II Kit [1]
- FX-1 Manual Follow Focus [1]
- F-40 Manual Follow Focus [1]
- Production Kit Bag (Slate, AC Kit) [1]
- 1st AC Front Tray [1]
- Radios+ Chargers [6]

CAMERA GRIP:

- 2 Stage Cine Tripod + 504HD Fluid Head [1]
- 645 Fast Twin Legs + 502AH Fluid Head [1]
- 75mm Hi-Hat [1]
- Breeza Rail-Dolly Kit [1]
- Slider Stands [2]
- 4ft + 6ft +8ft Rails [3]
- Apple Box set [3]
- Product ion Cart + Large Umbrella [1]
- Folding Stool [2]



LIGHTING:

- Aputure 120dii [1]
- Godox VL150 [1]
- Amaran 60X [1]
- Dedo 3 head Light Kit [1]
- NL-660 Bi-Colour LED Panel Light [2]
- NL-660 RGB LED Panel Light [2]
- TL30 RGB Tube Light [1]
- SL80 RGB Brick Light [2]

MODIFIERS:

- Aputure 60cm China Ball [1]
- QR-P 90cm Parabolic Soft Box [1]
- 80x120 Soft Box [1]
- 60x60 Soft Box [1]
- NL-660 Soft Box [2]
- SF60x90 5 set Flag & Net kit [1]
- Large Reflector (Gold, Silver, Black) [1]
- 2mx2m Blackout Cloth [6]
- Diffusion Silk's (3x5, 6x5, 9x5) [3]
- X2 Fresnel + Barn Doors [1]
- Smoke Machine + Fluid [1]

LIGHTING STANDS:

- Kupo Click Stand [4]
- Combo Stand [1]
- Kupo Boom Arm [1]
- Complete C-Stand [3]
- Ninja Double Riser [1]
- Turtle Stand [2]

LIGHTING GRIP:

- Pup Adapters [2]
- Tilt Mount Adaptor [3]
- Spring Clamps [6]
- Kupo Max Arm [2]
- K- Clamps [6]
- Grip Heads [4]
- 4" End Jaw Super Visor Clamp [1]
- 9" End Jaw Super Visor Clamp [1]
- 3" End Jaw Super Visor Clamp [1]
- 3" Centre Jaw Super Visor Clamp [1]
- Tube Clamps [3]
- Mini C-Clamp (Dino Clamps) [2]
- Mathews Extendelini [1]
- 8-12ft Autopole [1]
- 1-2m Autopole [1]
- Safety Chains [10]
- Sand Bags [8]
- Trip Mats [10]
- Tennis Balls [24]
- Ratchet and Camera Straps [4]
- Anti Sink pads [18]
- Basic Tools Set [1]

ELECTRIC & POWER:

- 30m Single Extension [2]
- 10m Single Extension [2]
- 5m Double Extension [2]
- 5m Single Extension [5]
- 3-Way with USB [1]
- 2m 4-Way [2]
- Portable RCDs [10]

- 98wh V-Mount [2]
- 190wh V-Mount [2]
- 220wh V-Mount [2]
- 230wh V-Mount [1]
- Dual V-Mount Charger [2]
- NPF Batteries [14]
- NPF Charger [2]

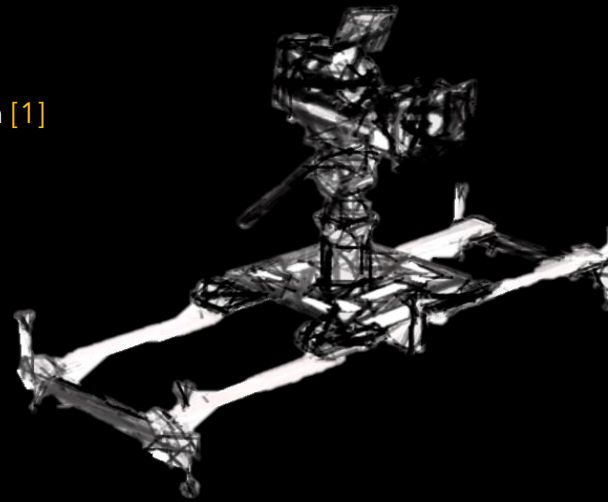
HEALTH & SAFETY:

- Hi-Vis Jackets [2]
- Safety Cones [4]
- Fire Extinguisher [2]
- Filming in Progress Sign [1]
- Trip Hazzard Sign [1]

ADDITIONALS:

- 375w Portable Power Station
- Additional BMPCC 4K + 6K Cameras
- Small HD 7" Monitor
- Tilta Nucleus M Follow Focus System
- Dana Dolly

**Item Swaps and Kit List
Customisation Available**





DAWN SKY FILMS EQUIPMENT

We are more than happy to rent any additional Equipment needed for your shoot at cost.

*All Additional Items are available depending on availability and provided at Cost

Vehicle is Provided for this package *

We offer Discounts on Large Quantities or for Longer Rentals.

*An Appropriate Vehicle for this package will be arranged by DSF. However due to unforeseen circumstances, the exact vehicle may vary depending on vehicle availability, and may on occasion be split between two smaller vehicles if needed.